



LESTER C. NOECKER SCHOOL

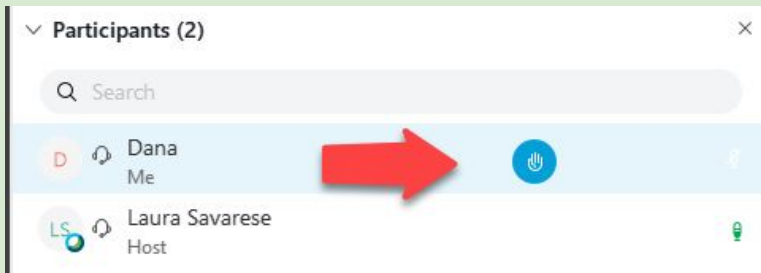
ROSELAND SCHOOL DISTRICT



Roseland Board of Education

March 18, 2021
7:30 PM

- All attendees will be muted on entry and will be muted for the duration of the meeting.
- When it's time for public comment, individuals should click the raise hand button to ask a question or voice public comment. Laura Savarese will unmute you and announce your name when it's your turn to speak.
- Please make sure to start by stating your name and address
- Public Comment #1 - Agenda Items for Approval Only
- Public Comment #2 - Agenda or Non-Agenda Items for the Board





I PLEDGE ALLEGIANCE

TO THE FLAG OF

THE UNITED STATES

OF AMERICA AND TO THE REPUBLIC FOR

WHICH IT STANDS ONE NATION UNDER GOD

INDIVISIBLE WITH LIBERTY AND JUSTICE FOR ALL

I. **CALL TO ORDER** – Board President

II. **STATEMENT OF COMPLIANCE**

II. **FLAG SALUTE**

III. **BOARD PRESIDENT REPORT**

IV. **COMMITTEE REPORTS**

V. **SUPERINTENDENT REPORT**

VI. **BUSINESS ADMINISTRATOR/BOARD SECRETARY REPORT**

VI. **PUBLIC COMMENT** – On agenda items only





**Board President
& Committees Reports**



**Principal Report
Mr. Sandoval**

Virtual Assemblies

“Through Magic, Illusions, Games and Quizzes, our cast-of-characters will show the audience simple inventive ideas they can use to help take care of the environment. We will teach the students that by Reducing what we use, Reusing what we can, and Recycling, we can reduce how much we send to the landfill. Plus, we will show how Litter affects the environment, what we can do to stop it, and how we can protect our Storm-Water runoff. Also, we will talk about what is E-Waste, and what do we do with it? Each student will leave the show with many new ideas how they can have a positive influence on the environment” - The Illusion Maker



SEL Day - March 26th!

[*Proclamation by Governor Murphy](#)

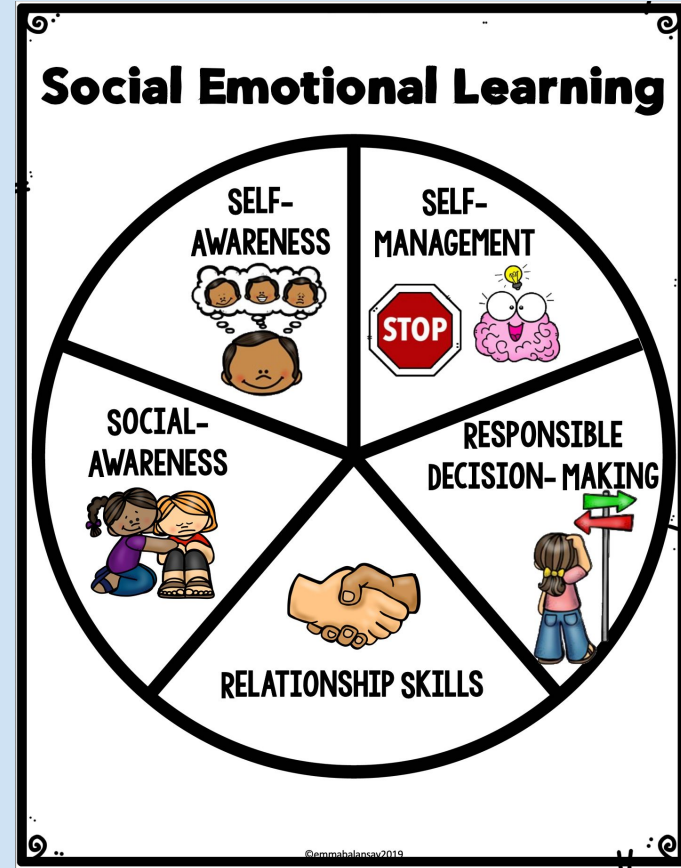
Goal of SEL Day: Build awareness and an understanding of what Social Emotional Learning is

Digital Library - (next slide)

New Classroom Poster for continued discussions

Teacher Resources - Provide teacher with more SEL resources

Parent Resources - To be distributed next week





YOU ARE NEVER ALONE
WHEN LOST IN
MAGIC & BOOKS
-MARC B.

Welcome to the
Social Emotional Library!
Take a look around!

Grief & loss

Spring SEL

Our faves

TOOL BOX

Bullying

Kindness

Welcome Back

Summer Programming

We are planning for in-person programming this summer

- ESY
- Enrichment
- Summer Kindergarten

Clubs will have an academic focus!



Parent Workshops!

Noecker is partnering with Good Grief



Parent Workshops!

We are partnering Good Grief to provide workshops on the following topics:

- Navigating Through Loss and Adversity
- Raising and Empowering Resilient, Self-Reliant Children
- Coping with Adversity: Adaptive Skills to Build Resilience
- Being is Doing: Supportive Communication Practices



**Superintendent Report
Ms. Somers**

Reopening Plan Update

March 18, 2021

1. Most Restrictive

100% Remote

If mandated or necessary
due to in-school
cases/exposure

2.

**A day/B day
(8:40-1:05)**

K - 2 Every Day AM/PM

- *No Lunch/Recess
- *Smaller groups
- *Social distancing
- *Required mask usage
- *Exploring coordination with the Y
- *Opportunity for additional remote support (SE/BSI/services) outside of day
- *Teachers "live" with small groups offsite group in the afternoon
- *Live, remote special areas
- *Remote Learning Only Option

3.

**A day/B day
(Full Day)**

K - 2 Every Day AM/PM

- *Lunch/Recess (gr 3-6)
- *Smaller groups
- *Social distancing
- *Required mask usage
- *No "live" with offsite group- assignments would be student-led and supported on onsite days
- *MAY have opportunity for additional remote support for offsite students (SE/BSI/services)
- *Remote Learning Only Option

4. Least Restrictive

**100% Onsite
All Full Day**

- *Lunch/Recess
- *Mandated mask usage
- *No social distancing
- *Remote Learning Only Option

Since September, we have followed our HYBRID Schedule (Step 2) with two COVID-19 schoolwide closures (Step 1) and one preemptive holiday closure.

- 31 positive cases (1st case - mid-October; most recent case - early March)
- Two School Closures - November & February*
 - Possible* [outbreak](#)- 2 or more cases identified, not linked to exposures outside the school setting, and no clear connection. In-school transmission was suspected
- Nine Cohort Closures - (does not include school closures)

Since the week ending November 14th, the Northeast Region has been in the **ORANGE - HIGH RISK** Level of the [Regional Risk Matrix](#).

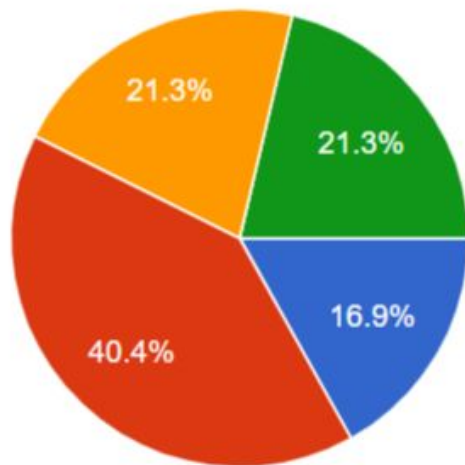
Readiness

- **Trends** - cases in the community are holding steady; really really hoping to move from ORANGE to YELLOW sooner than later
- Use of **Outdoor Space** - warmer weather enables the full use of outdoor spaces & tents
- Staff **Vaccinations** - many of our staff are “in process” with vaccines! This will minimize cohort quarantines and maximize feeling safe.
- Community and Staff **Support** - the majority support Step 3 of our Reopening Plan. Health and safety remain a top priority.
- Our **Ability to Remain Open** - we hope that our ability to remain open is consistent! We count on the community!

Readiness

LCN Reopening Health and Safety Survey (2/22/21)

272 responses

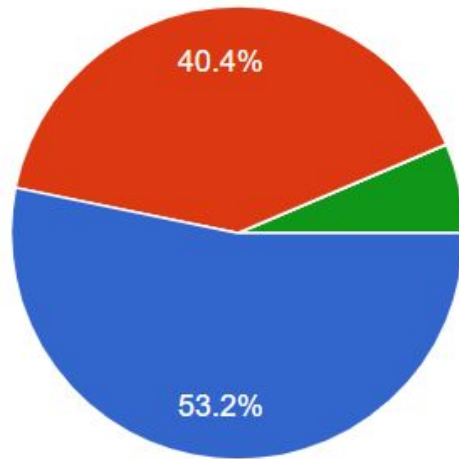


- Stay as is - Step 2 current Hybrid Schedule
- Plan Step 3 - All health and safety measures remain in place
- (PreK-2) Okay with exploring another option such as AM+PM cohort everyday schedule (see factors below)
- (Gr 3-6) Okay with exploring another option such as A+B Day cohort everyday schedule (see factors below)

Readiness

Staff Health and Safety Survey (2/22/21)

47 responses



- Stay as is - current Hybrid Schedule
- Plan Step 3 as long as health and safety measures remain in place
- (PreK-2) Okay with exploring an AM+PM cohort everyday schedule (see factors below)
- (Gr 3-6) Okay with exploring an A+B Day cohort everyday schedule (see factors below)

Looking at
Reopening Plan
Step 3

The Most Recent Guidance for Schools

CDC Guidance

<https://www.cdc.gov/coronavirus/2019-ncov/community/schools-childcare/operation-strategy.html>

Schools providing in-person instruction should prioritize two mitigation strategies:

- 1. Universal and correct use of **masks** should be required, at all levels of community transmission.*
- 2. Physical distancing (**at least 6 feet**) should be maximized to the greatest extent possible. In hybrid instruction, scheduling should be planned to ensure physical distancing.*

Most Recent Guidance

CDC Guidance

Mitigation Strategies

Our Mitigation Strategies (the CDC KEY FIVE are **bolded**)

- **Masks**
- **Physical distancing - SIX FEET**
- **Handwashing/Respiratory Etiquette**
- **Extensive Cleaning Protocols**
- **Contact Tracing**
- Ventilation - windows/doors
- Ventilation - HEPA Filters in every classroom
- Maintaining Cohorts
- Physical Barriers in classrooms
- Modified Layouts in classrooms - all desks face one direction, spaced six feet apart
- No Sharing of Objects (PE or classroom)
- Take Out Food Service
- No Communal Spaces (incl arrival/dismissal)

Recommendation

Approval of Step 3

The School Physician and Roseland/East Hanover Department of Health have approved **Step 3 of our Reopening Plan.**

- PreK-2 every day AM and PM sessions (NO CHANGE)
- Grades 3-6 A Day/B Day FULL DAY SESSIONS including lunch/recess.
- We will maintain ALL health and safety procedures including social distancing (SIX FEET) and cohorts.
- In April as the weather gets warmer, our goal is to have students outside for lunch and recess.
- If we have to have lunch inside, students will be in their classrooms within their cohorts (& barriers & social distancing).
- For scheduling, our goal is to have staff who are already with each cohort (special areas, aides) to limit any additional exposures.

Step 3 is aligned with CDC Recommendations and continues to meet the five+ key mitigation strategies.

Based on our health and safety goals, staff and community feedback, current guidelines, and the feasibility of moving to Step 3, we will shift to Step 3 on April 19th.

The year isn't over yet.

We continue to explore opportunities to expand onsite instruction within health and safety guidelines.

Period	Time	3rd	4th	5th	6th
Homeroom	8:45 - 8:55	Homeroom	Homeroom	Homeroom	Homeroom
Period 1	8:55 - 9:35	Special	Special	Special	Special
Period 2	9:35 - 10:15	Math	Math	Math	Math
Period 3	10:15 - 10:55	Math	Math	Math	Math
Period 4	10:55 - 11:35	ELA	ELA	ELA	ELA
Period 5	11:35 - 12:15	ELA	ELA	ELA	ELA
Period 6	12:15 - 12:55	Science/SS	Science/SS	Science/SS	Science/SS
Period 7	12:55 - 1:35	LUNCH	LUNCH	Science/SS	Science/SS
Period 8	1:35 - 2:15	Small Grp Inst	Small Grp Inst	LUNCH	LUNCH
Period 9	2:15 - 2:55	Small Grp Inst	Small Grp Inst	Small Grp Inst	Small Grp Inst
	2:55 - 3:15	Small Grp Inst	Small Grp Inst	Small Grp Inst	Small Grp Inst

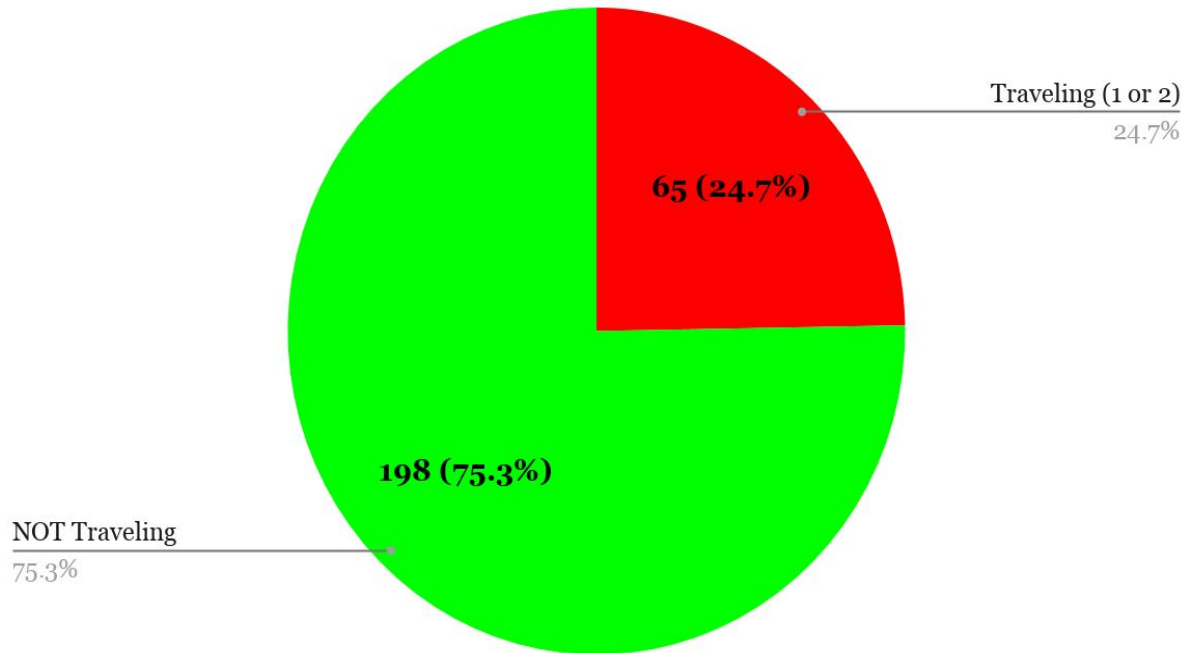
A Day / B Day FULL DAY Schedule for Grades 3 - 6 includes Lunch/Recess and Small Group Instruction in the Afternoons. The FULL DAY Schedule will be Monday through Thursday with a 1:05 PM (no lunch) day on Friday.

What is “Small Group Instruction?”

- The opportunity for students to work in small groups with their teacher(s) and peers, including those working remotely.
- Students at home will have access to their teachers (and peers) during Small Group Instruction.
- Not NEW or live-streamed instruction, but support, enrichment, extensions, and SEL building across the core subjects.
- Opportunity to build full-day stamina, explore content more deeply, and strengthen connection and community.

Looking Ahead - April Spring Break

Staff & Families' Travel Plans

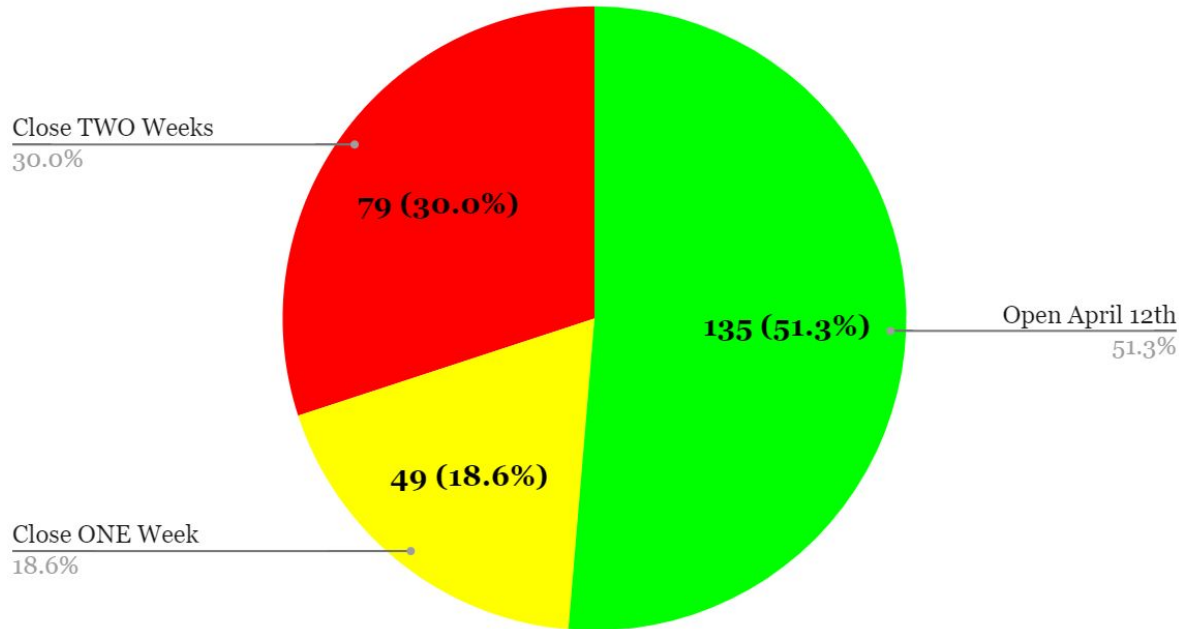


The majority of the school community is reporting that they are NOT traveling.

AT THIS TIME
The 14-day quarantine remains in effect at this time for anyone who travels out of the immediate area.

Looking Ahead - After April Spring Break

After Spring Break Survey



**Anticipating OPENING
after Spring Break
(April 12) though
some cohorts may be
remote due to staffing.**

AT THIS TIME
**The 14-day quarantine
remains in effect at
this time for anyone
who travels out of the
immediate area.**

Looking Ahead - This Year

As we move to Step 3 on April 19th, we will evaluate where to go from there, as well as:

- Monitor our ability to maintain rigorous cleaning schedules with lunch and recess in the mix.
- Evaluate and continue to explore how and where to increase onsite instruction for all students.
 - What is the balance of SAFETY and ONSITE?
 - Remote Students - how many will remain remote through the end of the year?
 - How can we support students' transition to longer days and build stamina?
 - How are lunch/recess working out (knowing it is likely to be similar next year)?
 - Can we provide an extended day for K-2 students to acclimate them for next year?
 - Can we safely combine any cohorts?
 - What are the scheduling impacts (teachers, classes) for students and teachers?
 - How can we ensure everyone continues to feel safe and has what they need?
 - How can we support families with the evolving schedules?
 - What have we learned that we want to improve for next year?

1. Most Restrictive

100% Remote

If mandated or necessary due to in-school cases/exposure

2.

**A day/B day
(8:40-1:05)**

K - 2 Every Day AM/PM

- *No Lunch/Recess
- *Smaller groups
- *Social distancing
- *Required mask usage
- *Exploring coordination with the Y
- *Opportunity for additional remote support (SE/BSI/services) outside of day
- *Teachers "live" with small groups offsite group in the afternoon
- *Live, remote special areas
- *Remote Learning Only Option

3.

**A day/B day
(Full Day)**

K - 2 Every Day AM/PM

- *Lunch/Recess (gr 3-6)
- *Smaller groups

4. Least Restrictive

**100% Onsite
All Full Day**

- *Lunch/Recess
- *Mandated mask usage
- *No social distancing
- *Remote Learning Only

Possibility of a Step 3 1/2 ?

What changes if the six feet recommendation is dropped to three feet?

How can we support our ~18% Remote Students under a revised hybrid?

Can we provide an extended day for K-2 students to acclimate them for next year?

OR can we combine cohorts?

What if lunch is still six feet?

Questions?

Please use the
April Reopening
Plan Question
Form

posted on our website.

Thank you!

Looking Ahead - Next Year

- Building a **budget** that supports our 2021-2022 goals
- How can we build in additional **flexibility** given the unknowns of September?
- What do we know we want to **improve** for next year?
- What do we want to address for **scheduling** (GE and SE)?
- **Preparing** for 2021-2022 - what will classrooms, lunch, recess, and transportation look like? What did we learn this year?
- How can we ensure everyone feels **safe** and has what they need?
- Can we, if needed, effectively support **remote learning** AND full-day onsite learning? How might that look?
- How can we support students' **transition** to longer days and building stamina?
- How can we further support **socio-emotional well-being, academics, and connection**?



Business Administrator Report
Mr. Gibbs



LESTER C. NOECKER SCHOOL
ROSELAND SCHOOL DISTRICT

2021-2022

Preliminary Budget Review

March 18, 2021

The Budget Process

All Teachers/Administrators (November-January)

Finance Committee (February/March)

Finance Committee: Laura Savarese, Corby Murano

March 18th

Preliminary Budget Presented

& Board Vote

April 29th

Final Budget Presented to the Public

& Board Vote



LESTER C. NOECKER SCHOOL
ROSELAND SCHOOL DISTRICT

- Return Students to School!!
- Health and Safety
- Continue to Support the Strategic Plan
 - *Service & Community*
 - *Future Ready Curriculum & Instruction*
 - *Character Development*
 - *STEAMed & Engaged*
- Maintain Class Sizes & Current Programs
- Continue to Focus on Student Achievement & Experience
- Maintain Our Beautiful Facilities
- Be Fiscally Prudent

just
KEEP
Swimming

Primary Goals



LESTER C. NOECKER SCHOOL
ROSELAND SCHOOL DISTRICT



Each year we build a budget based upon known/unknown factors; many of which are up to 18 months in the future! Since the approval of the 2020-21 budget last Spring:

- Facilities and Maintenance Items (ventilation, HEPA filters, cleaning supplies, health & safety items) (-)
- Additional Technology Costs (-)
- Socially-Distanced Transportation (-)

**What
Happened
Since The
Last
Budget?**



LESTER C. NOECKER SCHOOL
ROSELAND SCHOOL DISTRICT



Need to Know:

- **Our 2% tax levy = \$168k**

We are NOT eligible to use:

- Banked Cap
- No Waivers are available
- We cannot increase the tax levy without a referendum

2.0%

Through prudent long-range fiscal planning and full utilization of available state and federal grants and resources, we are able to meet our community's & district's needs at a 2% tax levy.



LESTER C. NOECKER SCHOOL
ROSELAND SCHOOL DISTRICT



Instruction & Programming 2021-2022

- Maintaining All Staff & Programs
- Additional Special Education Teacher
- Expanding BSI Support through Scheduling
- Increasing the LDTC (CST) from 3.0 days to 4.0 days
- Adding Supplies & Materials (as our 4 4th grade sections move to 5th)
- Continuing to Support Our Instructional Initiatives
 - Utilize ESSERII funding for SEL-Mental Health Support and Assessment/Academic Resources
 - (Continue to) Utilize ESEA Title funding for literacy, SEL, professional development, inclusivity training, parent support, and related materials

Growing Our Special Education Department

Year-over-year the district has made a financial commitment to support our special education programs. Some items are required and out of our budgetary control (out-of-district students, SE transportation, enrollment) but growth and improvement of the department is consciously planned and budgeted.

2017-2018
Inclusion began!

Added an additional SE teacher

2018-2019
Reinstated 2.5 CST positions (LDTC, School Psychologist, Social Worker)

2019-2020
Added an additional SE teacher

2020-2021
Added an additional SE teacher
Increased LDTC from 2.5 to 3.0 days

2021-2022
Budget Planning
Adding an additional SE teacher
Increasing LDTC from 3.0 to 4.0 days



LESTER C. NOECKER SCHOOL
ROSELAND SCHOOL DISTRICT



Transportation

We will continue to follow state, federal, and DOH recommendations pertaining to social distancing.

If everything is “normal”, our goal is to reinstate courtesy busing.
Courtesy busing is actually less \$\$ than every day, mandated, socially distanced busing.

Our goal is busing every day for all students.



Additional Annual Allocations and their Impacts on the 2021-22 Budget

- Salary Increases (Currently negotiating - Budgeted 3%)
- Health Care Cost Increases
 - Medical +7%
 - Dental +3%
 - Rx +0%
- Increase in Liability Insurance (+10%)
- Increase in Workers Compensation Costs (+6%)

Additional State Aid of ~\$88.5k has been allocated to SE Staffing & Transportation



LESTER C. NOECKER SCHOOL
ROSELAND SCHOOL DISTRICT



Maintenance Projects

Proposed Inclusions

Maintenance Projects

These are all part of the Board approved M-1 Maintenance Plan

- Repairs and Inspections to the Roof and Skylights
- Univent Maintenance & Safety Inspections
- Inspections and Repairs to Play Scapes & Swings
- Asbestos Maintenance and Repairs
- Maintenance and Repairs to Boiler System
- Repairs to Brick Face & Fascia on Building

If projects are completed for less than estimated, funds are returned to the Maintenance Reserve Account for use in subsequent years' Maintenance Projects.



LESTER C. NOECKER SCHOOL
ROSELAND SCHOOL DISTRICT



CAPITAL PROJECT NEWS

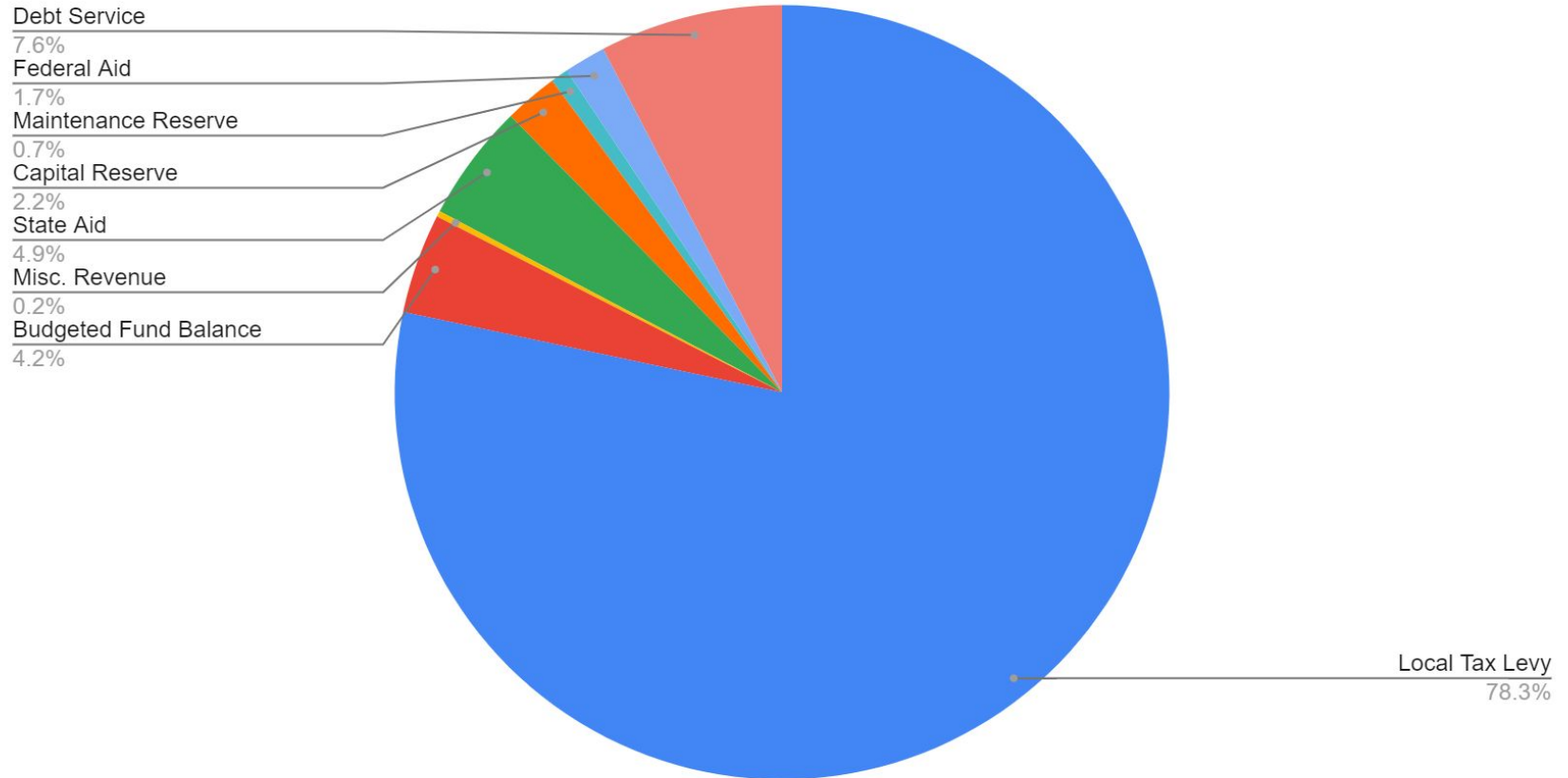
Proposed Inclusions Capital Projects

(Capital Reserve - not part of the tax levy)

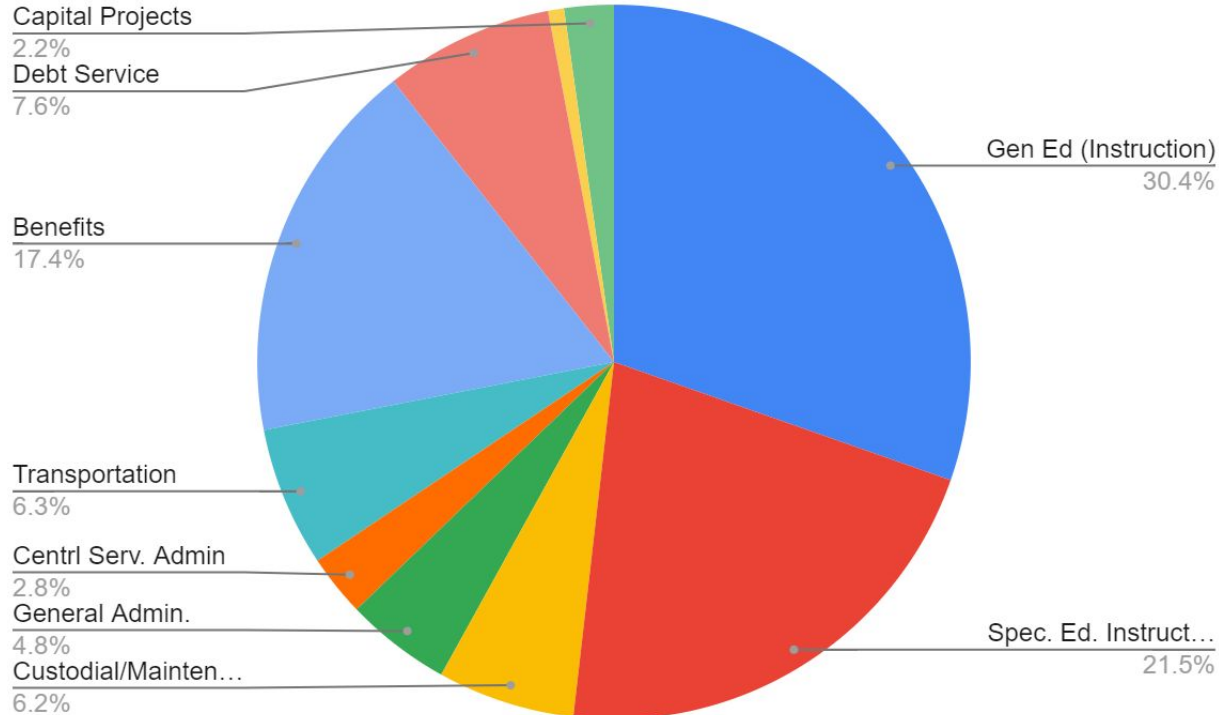
These are all Strategic and Long Range Facilities Plans!

- Update Controls for HVAC Rooftop Units
- Replace Five Electrical Breaker Panels
- Replace Walkways & Curbs where needed in the front of the Building
- Plumbing - Replace Gate Valves for 19 Classrooms

Sources of Revenue- \$10,980,822



Budget Expenditures- \$10,980,822



Through prudent long-range fiscal planning and full utilization of available state and federal grants and resources, we are able to meet our community's & district's needs at a 2% tax levy.



LESTER C. NOECKER SCHOOL
ROSELAND SCHOOL DISTRICT



Tax Impact Based on Assessed Value, Not Market Value

“Average” assessed home value* = **\$466,907**

Tax Levy Increase: 2.0%

Increase For Year*: \$62.81

Increase Per Month*: \$5.23





LESTER C. NOECKER SCHOOL
ROSELAND SCHOOL DISTRICT



Thank you!

Any Questions?

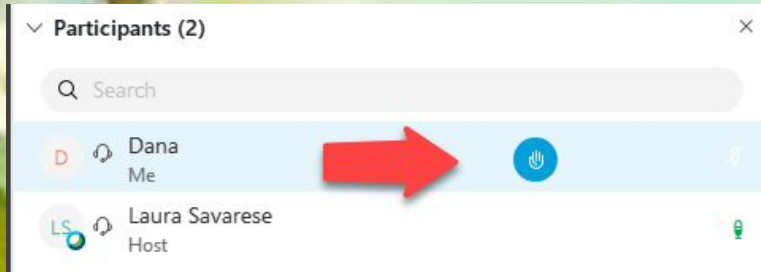


LESTER C. NOECKER SCHOOL

ROSELAND SCHOOL DISTRICT



VII. PUBLIC COMMENT



- All attendees will be muted on entry and will be muted for the duration of the meeting.
- When it's time for public comment, individuals should click the raise hand button to ask a question or voice public comment. Laura Savarese will unmute you and announce your name when it's your turn to speak.
- **Please make sure to start by stating your name and address**
- **Public Comment #1 - Agenda Items for Approval Only**
- Public Comment #2 - Agenda or Non-Agenda Items for the Board

VII. APPROVAL OF ACTION ITEMS

BOARD MINUTES/REPORTS

FINANCE/FACILITIES

PERSONNEL/MANAGEMENT

VIII. PUBLIC COMMENTS

IX. OLD BUSINESS

NEW BUSINESS





LESTER C. NOECKER SCHOOL

ROSELAND SCHOOL DISTRICT



X. PUBLIC COMMENTS



- All attendees will be muted on entry and will be muted for the duration of the meeting.
- When it's time for public comment, individuals should click the raise hand button to ask a question or voice public comment. Laura Savarese will unmute you and announce your name when it's your turn to speak.
- **Please make sure to start by stating your name and address**
- Public Comment #1 - Agenda Items for Approval Only
- **Public Comment #2 - Agenda or Non-Agenda Items for the Board**



**The next Regular Board Meeting will be held
virtually on
Thursday, April 29, 2021 at 7:30 PM.**